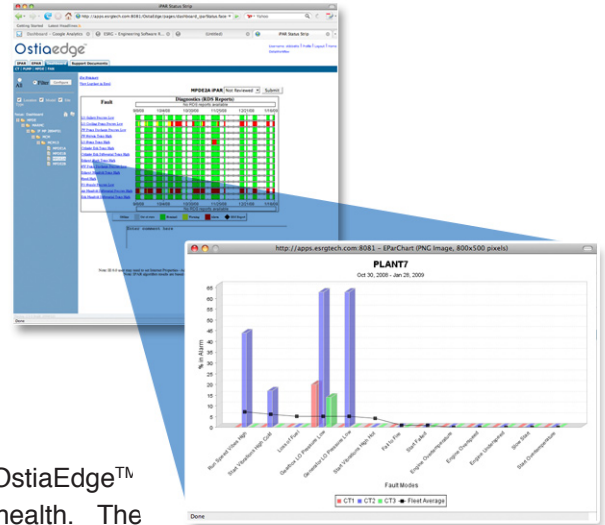


PRESS RELEASE

ESRG Announces Release of OstiaEdge™ Monitoring Suite

Virginia Beach, VA—January 30, 2009—ESRG today announced an expansion of its remote monitoring software portfolio, introducing the OstiaEdge™ Monitoring Suite. The OstiaEdge™ Monitoring Suite, consisting of Plant Edition (PE), Central Edition (CE), and Enterprise Edition, includes features which allow machinery operators to improve productivity, reduce forced outages, and increase knowledge sharing. This software provides engineers, operators, and maintenance personnel the ability to create condition based rule sets for display in Web dashboards. In the past year, ESRG has upgraded every product in its portfolio, including enabling OstiaEdge™ PE and CE to function completely in either Windows or Linux environments.



The portfolio includes fleet level monitoring views within the OstiaEdge™ portal, providing single-screen comparisons of machine-to-fleet health. The OstiaEdge™ rule engine uses online data sources and equipment database models as inputs for its embedded qualification engine. Through data qualification, the engine determines the machine state before applying a rule set thereby reducing false alarms. The OstiaEdge™ Enterprise System also includes tools to transfer data from remote locations to a centralized location, enabling full monitoring capabilities for corporate located engineering and operations staff.

“Many remote monitoring software packages provide plant level diagnostics capability,” said Steven Tibbetts, Director of Business Development at ESRG. “With the release of OstiaEdge™ Central Edition and Enterprise Edition, ESRG has delivered on its promise to address the needs of remote engineering staff and ensure they have the tools needed to support plant level teams.”

About ESRG

Established in 2000, ESRG provides leading-edge data analysis and remote monitoring technology for the US Navy and commercial industry. ESRG is the data analytics leader for the US Navy surface fleet remote monitoring program providing a fleet-wide service of performance reports on gas turbines, diesel engines, and balance of plant equipment. Commercial users and US Navy fleet support teams turn to ESRG for their technology and expertise in reporting, dashboards, data integration and data analysis as well as their ability to utilize in-house subject matter experts to write diagnostic and anomaly detection rules.

ESRG Media Contact

Robin Russell
Engineering Software Reliability Group
757-965-5963
robin.russell@esrgtech.com
www.esrgtech.com

